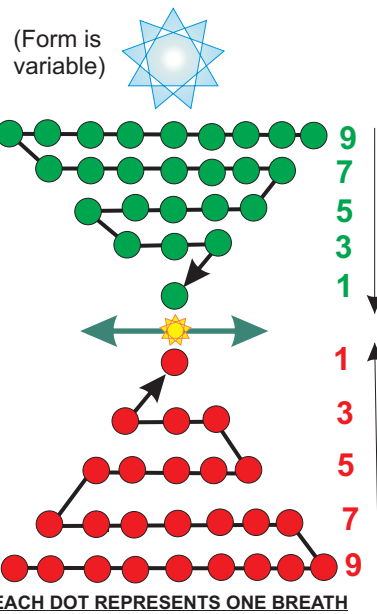


PLATE THREE (AERIOPAX) "TORAH-AUR AERIOPAX" VERSION: MORE COMMENTARY.

THREE TEMPLATES TO THE "BREASTPLATE OF THE TORAH AUR" (OR): PYTAR, MOR, ECLIPISA

This is an extract from information provided by ThothHorRa Khandr, translated by Maia Nartoomid. This was given as instructions for beginning to rebuild a Light Grid in a human whose Light Bodies had been severely damaged by former life TIME IMPLOSIONS. It forms four GATES, described below.

The Isis Eye (RESHEL) or Aeriopax and the New Earth: The Isis Eye, also known as the Aeriopax sacred geometry, is the major generator of the 44:44 planetary Ascension Stargate

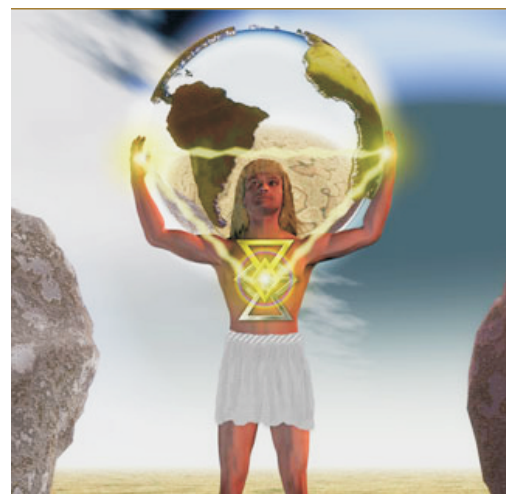


SAPPHIRE GATE (Crown, ajna, Shambala Gate (over ajna), throat)

EMERALD GATE (Heart) is the center for the PYTAR

DIAMOND FIRE GATE (Solar Plexus) is the center for the MOR

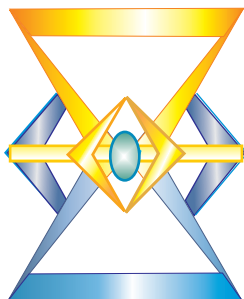
RUBY GATE (Navel, Root) is the center for the ECLIPISA



THOTH Drawing by Maia Nartoomid, 2008.

http://www.spiritmythos.org/members/numis_om/0801.htm#
<http://www.spiritmythos.org/TM/divine-fire/seraphi.htm>

TORAH-AUR AERIOPAX MEDALION



The AERIOPAX geometry is taken directly from a complex schematic of TWO Reshel systems that are linked and phase-match in a specific "lock-in" mode in what appears to be TWO Flashing-Universe dynamics. This is beyond our present understanding; we now believe that ALL Universes (the "Attasic Universe") are linked in the same FLASH (implosion and recreation, much as a "constant Big-Bang"). The "Flashing" is very fast, it is generated in the polarized Universes (stars and galaxies) but is supported by a NEUTRA UNIVERSE that is Real. (This is represented in the Core Acceleration Bar.) My present THEORY is that this permits interaction between TIME realities.



THOTH (via MAIA NARTOOMID): Together, this "Breastplate" contains the Aegis of Metatron fire-pictographs which will open a path into the TORAH AUR (or "Torah Or"). It is essentially the 'Breastplate of Adam Kadmon.' For the human it will allow a direct access path of Grace to the next level of Light Body transfer necessary for the person to move past the inertia created in this life. Understand that this Breastplate has the potential to carry the person much further than just the 'next level', if he/she allows him/herself to surrender into the full Spirit transfer. If he/she does not, they will accept whatever measure they are able to attain **without any further movement on their part**. It is the Grace being given them through this medium.

Notice that there is no crystal to be set in the SAPPHIRE GATE, for it is here that the entire manifestation of the Breastplate has the **potential** to flame, if he/she is able to raise the whole consciousness into that level of receipt.

It is important that the person verbally and internally give not only their permission for the insertion of the Breastplate to take place, but commit to it in Mind, Body and Spirit from a true desire to receive Grace, and lift above the travail of past irresolutions.

Thoth: (the Aeriopax)"...is a geometric for bringing together the Attasic Universe as a point of mind. Not in a physical sense, but as a hologram in the mind, enabling that sentience to sustain passage through conflicting time gates...the Aeriopax harmonic.. is a grid of time reality exchange. Once activated, the grid allows the passage between multi-layered time fields without distortion. There are 16 reference nodes: those points of synapse which create a referral of information through the grid. There are 6 matrices in which to create virtual reality fields and the rhombic spinning field in the center. This spinning field is the 'time tunnel' or vehicle for movement within the entire process. The parallel bar is the 'core accelerator': charging, discharging and maintaining the energy separation between realities. Without the core accelerator all interacting realities would become enmeshed in one another - something like wadding bundles of chewing gum together and then trying to separate them."

Above quote from: http://www.spiritmythos.org/earth/aeriopax_ascension.htm