

LADY OF LIGHT: 7 (14) PETALED CROWN AND TABLET SIGNIFY A SESHETA ROLE. BEST OF ATLAN/LEMURIAN WISDOM RECEIVING EAST-TO-WEST LIGHTNING (MATH. 24:27-31) INSTALLING INTO THE PLANETARY HEMPTAHA (UNCOILING SERPENT) LINE.



SESHETA CROWN: SERPENTS SPIN TO CREATE A FIELD ORGANIZING TELEDISKS OF MANY SYSTEMS. "FLOWER" TRANSLATES INTO A USABLE FORMAT.

HARBARRAZA MEDALION: ABBREVIATED VERSION OF A COMPLEX BOOK (FROM THE SOLOMON TEMPLE) CODING THE ASCENSION LAYOESH PRIMARY PILLAR. USED IN THE SOLOMAE TEMPLE.



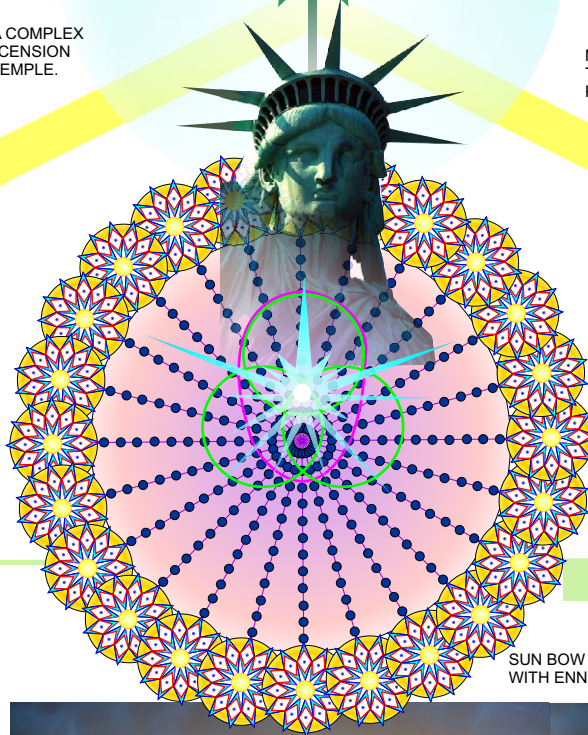
MANNA-LI MEDALION: BASIS FOR THE SOLOMAE TEMPLE RINGS. COMPLEMENTS THE HARBARRAZA PILLAR.



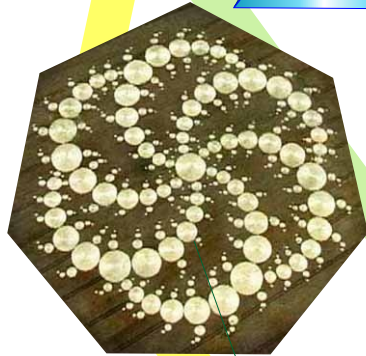
RESHEL: AERIOPIX MEDALION: THE PRIMARY METATRONIC SYSTEM FACILITATING LP-40 (TIME SHIFT) AND THE ASCENSION.



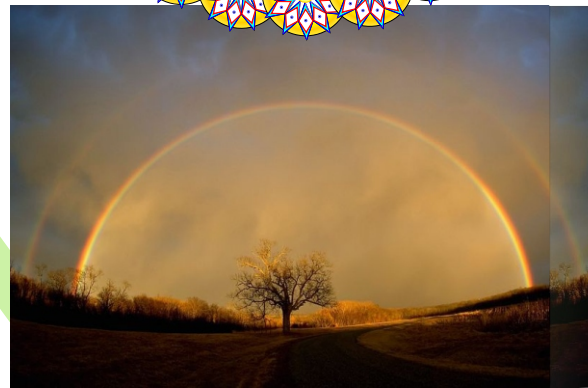
HUR'ATON: CROP FORMATION AT ALTON BARNES MATRIX. SOLARIAN BEE: "ARK OF ALL ARKS" SUPERIOR AXIATONAL AUGMENTATION TO THE HUMAN LIVING ARK.



SUN BOW CLAN LOGOS WITH ENNEAD RINGS



CROP FORMATION: MAZURIEL (CENTER STAR) AND ALL CENTRAL SUNS FORM THE SACRED HEART: MANIFEST

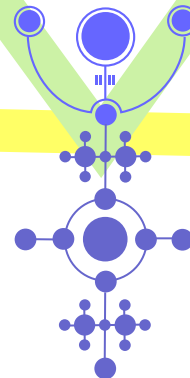
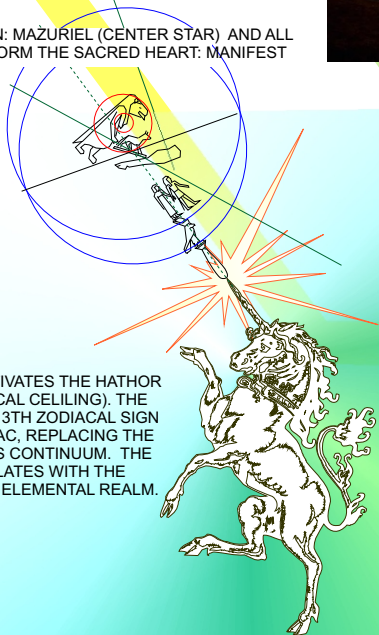


EDEN TREE: EDEN ("CONTROLLING FOUNDATION") IS THE MODEL DYNAMIC FOR THE NEW LIVING-ARK.



CHARIOT OF THE SUN LOGOS: THOTHORRA'S MERKABA GROUP OF 2197 SOULS.

MONOCEROS ACTIVATES THE HATHOR (DENDERA ZODIACAL CELILING). THE UNICORN IS THE 13TH ZODIACAL SIGN IN THE NEW ZODIAC, REPLACING THE CETACEAN IN THIS CONTINUUM. THE UNICORN CORRELATES WITH THE CHRISTOS IN THE ELEMENTAL REALM.



BAR-EN CROP FORMATION A UNIVERSAL CONNECTIVE CONTAINS THE M-STRA DNA FORMATS (NEW RACE).



SERAPHIC ENNEAD WINGED-STAFF LOGOS. THE ENNEAD INITIATES REDEMPTION OF TRAPPED LIGHT PROGRAMS. THEIR RADIONIC NUMBER IS 4444.259

SYNTHIA CROP FORMATION, 13 RHOMBUSES IN ADVANCED RESHEL SYSTEM FORMS A 20-POLE "GEOCHRONIC" OUTER RING. RESONANT WITH THE SAR CHENOWK TEMPLE.